

Portable Power Sprayer

AMP-768-PRO 4S

AMP-968-PRO 4S



DISCLAIMER: DUE TO CONSTANT UPGRADATION, FEATURES AND SPECIFICATIONS ARE SUBJECT TO CHANGE WITHOUT NOTICE



**BEFORE OPERATING THIS MACHINE,
PLEASE READ THESE INSTRUCTIONS CAREFULLY**

CAUTION

1. Stop running the gasoline engine before the tank is refueled, and ensure that the gasoline engine is far from the fire. Against the position, discharge the exhaust gas from the rooms, channels using gasoline engine or any other closed places.
2. Forbid to touch the muffler and the body when the gasoline engine runs and just stops.
3. Don't touch the ignition plug cap and wires, to avoid the electrical shock
4. Forbid children and persons unconcerned to touch the gasoline engine.
5. Ensure the cooling of the muffler and the body, cover the gasoline engine after daily work.
6. Against the problem, the damage or the misfire of gasoline engine, check and maintain the gasoline regularly and clean the deposit carbon in the muffler and in the cylinder exhaust.
7. Forbid to use pure gasoline (without two-stroke engine oil) as fuel.
8. Against the damage of gasoline engine and the instruments, forbid to accelerate abruptly, to run speedily and stop abruptly.
9. Forbid the drunk, the dizzy and the pregnant to use the gasoline engine.

PREPARATION

Refuel

Use the mixture of the gasoline and the two stroke engine oil, the volume ratio is 25-30:1 (Fig-1)

Check and clean the air filter

The air filter must be often cleaned, or the polluted air filter will lower the output power of the engine. If the core is blocked by dust, use gasoline to clean the core and the inside of the air filter, then dip in the oil, wring oil out and put the core back (Fig 2)

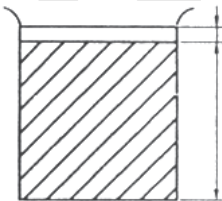


Fig 1

1. The FC Two-stroke engine oil
25. The Gasoline

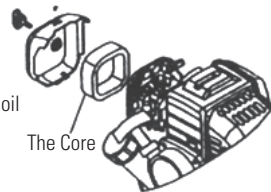


Fig 2

START UP

1. Turn on the gasoline switch until the gasoline flows out the clear plastic pipe. (Fig 3)
2. Close the choke totally (Fig 4)
If the engine is heated, the choke must be totally opened.
3. Open half the throttle.
4. Draw the starter several times slowly, and then draw quickly.

Note: If the excessive gasoline causes the difficult start, take down the ignition plug and the input pipe, open the choke and the throttle totally, draw the starter several times then install the input pipe and start the engine. After the startup, open the choke totally.



Fig 3

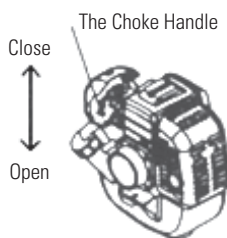


Fig 4

RUNNING

1. After the engine starts, run 3-5 minutes at a low speed
2. When the engine is heated enough, adjust the throttle handle to the corresponding speed.
3. Note: don't accelerate abruptly due to bad lubrication of the engine at the beginning of startup.
4. Avoid the speedy idle motion and over speed motion. If the throttle is totally opened, the engine will run over speed, which not only shortens the service life of the engine but also causes more problems in the engine.

STOPPING

1. Reduce the gasoline engine to the slowest speed and run 3-5 mins
2. Press the stop switch to stop the engine.

MAINTENANCE

1. Daily check

- Check all screws and nuts
- Check oil leakage or air leakage

2. Check after running 20 hours

- Clean the core of the air cleaner
- Clean the gasoline filter

3. Check after running 50 hours

- Refasten the nuts of the cylinder
- Clean the accumulated carbon both in the combustion chamber and in the exhaust of the cylinder
- Clean the accumulated carbon in the ignition plug, adjust the clearance to 0.6mm (Fig 5)
- Clean the accumulated carbon both in the intake and in the exhaust of the muffler (Fig 6,7)

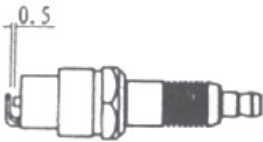


Fig 5

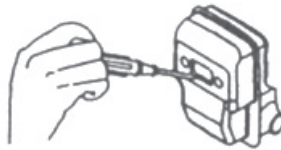


Fig 6

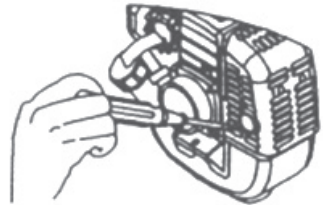


Fig 7

STORAGE

If the gasoline engine isn't used for a long time, it must be maintained as follows:

1. Remove the fuel in the tank and in the carburetor, close the choke totally, draw the starter 3-5 times.
2. Take down the spark plug, add certain engine oil from the spark plug hole into the cylinder, and draw the starter 2-3 times to move the piston to the top dead center, then install the spark plug.
3. Use the soft cloth with engine oil to clean the surface of the engine, stor the engine in a dry and windy place for the next use.

TRUBLE SHOOTING

1. Fail to start

- Oil switch is not turned on
- Gasoline is mixed with water, replace it
- The ignition plug has accumulated carbon or has been broken
- Poor contact of the high voltage wire with the spark plug

2. The engine can start, but can't run fast

- The choke is either open or closed fully
- The ratio of engine oil and the gasoline is normal or not
- Maybe there is water in gasoline

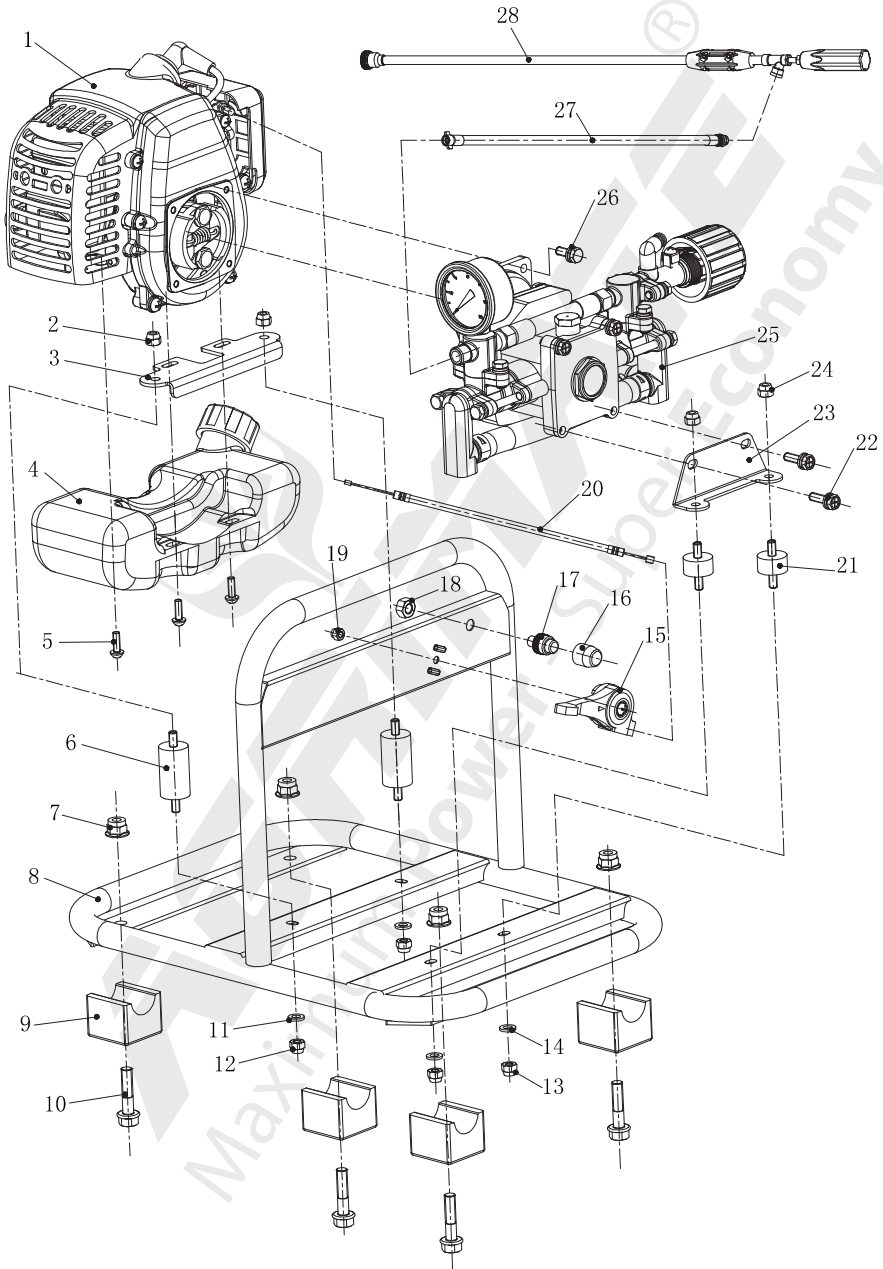
3. The gasoline engine can run, but has not enough power

- Maybe the core of the air filter is blocked by dust
- Maybe the cylinder exhaust and the muffler are blocked by accumulated carbon
- The piston, the piston rings and cylinder have been badly worn out
- Maybe the gasoline filter is blocked by dust
- The body or the top of the shaft has oil leakage and air leakage

4. The gasoline engine stops suddenly when running

- Run out of the gasoline
- The high voltage wire drops
- The ignition plug has accumulated carbon or has been broken
- The gasoline filter is blocked by dust
- Maybe there is water in the gasoline
- The air hole of the tank lid is blocked by dust

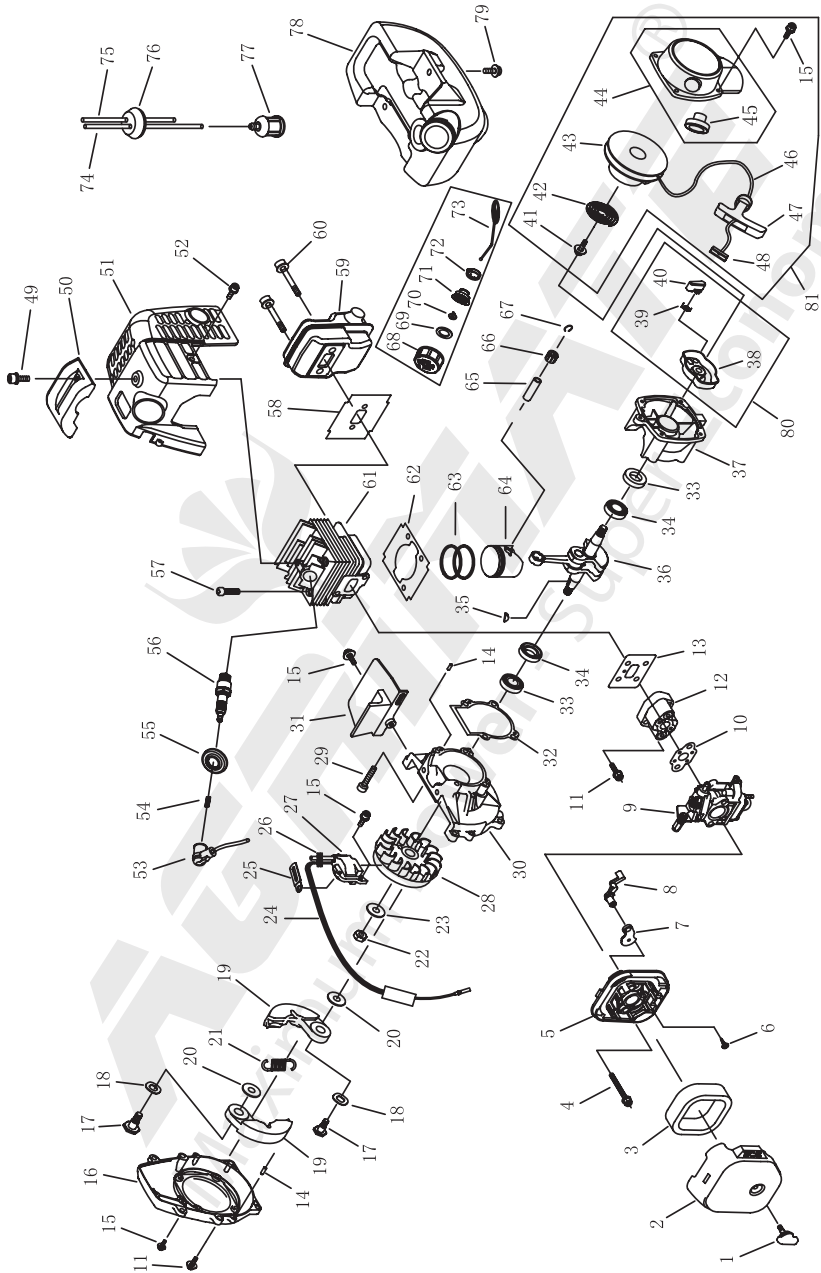
STAND DIAGRAM OF AMP-768 PRO | AMP-968 PRO



STAND PARTS LIST OF AMP-768 PRO | AMP-968 PRO

S.N	Part No.	Description
1	AMP 768 PRO S01	Engine
2	AMP 768 PRO S02	Nut M6
3	AMP 768 PRO S03	Engine stand
4	AMP 768 PRO S04	Oil tank
5	AMP 768 PRO S05	Screw M5X16
6	AMP 768 PRO S06	Joint
7	AMP 768 PRO S07	Nut M8
8	AMP 768 PRO S08	Frame
9	AMP 768 PRO S09	Joint
10	AMP 768 PRO S10	Bolt M8*35
11	AMP 768 PRO S11	Washer M6
12	AMP 768 PRO S12	Nut M6
13	AMP 768 PRO S13	Nut M6
14	AMP 768 PRO S14	Washer M6
15	AMP 768 PRO S15	Flex acceler ator
16	AMP 768 PRO S16	Engine stop protector
17	AMP 768 PRO S17	Engine stop switch
18	AMP 768 PRO S18	Nut M8
19	AMP 768 PRO S19	Nut M5
20	AMP 768 PRO S20	Cable
21	AMP 768 PRO S21	Joint (pump)
22	AMP 768 PRO S22	Bolt M6*16
23	AMP 768 PRO S23	Pump stand
24	AMP 768 PRO S24	Nut M6
25	AMP 768 PRO S25	Pump
26	AMP 768 PRO S26	Bolt M6*16
27	AMP 768 PRO S27	Outlet hose
28	AMP 768 PRO S28	spray gun

ENGINE SPARE PARTS DIAGRAM OF AM-P768-PRO

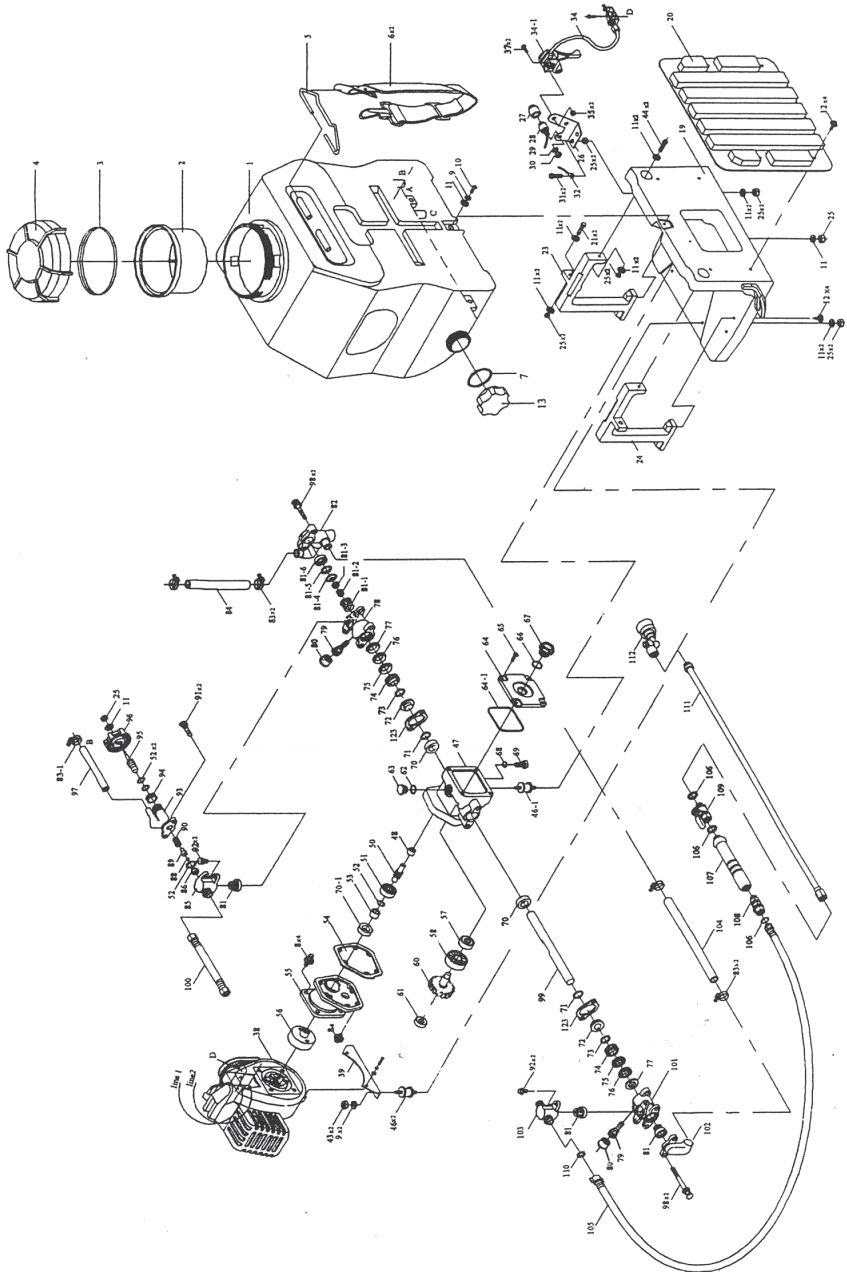


ENGINE SPARE PARTS LIST OF AM-P768-PRO

S.N.	Part No.	Description
1	AMP 768 PRO E01	SCREW
2	AMP 768 PRO E02	CLEANER OUTSIDE COVER
3	AMP 768 PRO E03	CLEANER ELEMENT
4	AMP 768 PRO E04	SCREW M5X55
5	AMP 768 PRO E05	CLEANER INSIDE COVER
6	AMP 768 PRO E06	SCREW ST4.2X12-F-H
7	AMP 768 PRO E07	CHOKE
8	AMP 768 PRO E08	CHOKE HANDLE
9	AMP 768 PRO E09	CARBURATOR
10	AMP 768 PRO E10	GASKET
11	AMP 768 PRO E11	SCREW M5X20
12	AMP 768 PRO E12	INLET MANIFOLD
13	AMP 768 PRO E13	CYINDER WASHER
14	AMP 768 PRO E14	ANNUL B3X10
15	AMP 768 PRO E15	SCREW M4X16
16	AMP 768 PRO E16	FAN COVER
17	AMP 768 PRO E17	CLUTCH STEP SCREW
18	AMP 768 PRO E18	WASHER
19	AMP 768 PRO E19	CLUTCH SHOE COMP.
20	AMP 768 PRO E20	WASHER
21	AMP 768 PRO E21	CLUTCH SPRING
22	AMP 768 PRO E22	NUT M8X1
23	AMP 768 PRO E23	WASHER 8
24	AMP 768 PRO E24	STOP CORD COMP
25	AMP 768 PRO E25	CLIP
26	AMP 768 PRO E26	PRIMARY CORD GROMMET
27	AMP 768 PRO E27	MAGNETO STATOR
28	AMP 768 PRO E28	MAGNETO ROTOR
29	AMP 768 PRO E29	SCREW M5X25
30	AMP 768 PRO E30	FRONT HALF CRANK CASE
31	AMP 768 PRO E31	GUIDE PLATE
32	AMP 768 PRO E32	CRANK CASE GASKET
33	AMP 768 PRO E33	OIL SEAL
34	AMP 768 PRO E34	BALL BEARING 6001/P5
35	AMP 768 PRO E35	KEY
36	AMP 768 PRO E36	CRANK SHAFT COMP.
37	AMP 768 PRO E37	REAR HALF CRANK CASE
38	AMP 768 PRO E38	STARTER PULEEY ASS'Y
39	AMP 768 PRO E39	STARTER PAWL SPRING
40	AMP 768 PRO E40	STARTER PAWL
41	AMP 768 PRO E41	SCREW M5X10
42	AMP 768 PRO E42	RECOIL SPRING

S.N.	Part No.	Description
43	AMP 768 PRO E43	STARTER ROPE REEL
44	AMP 768 PRO E44	RECOIL STARTER BODY
45	AMP 768 PRO E45	ROPE GUIDE
46	AMP 768 PRO E46	ROPE
47	AMP 768 PRO E47	STARTER HANDLE
48	AMP 768 PRO E48	GASKET
49	AMP 768 PRO E49	SCREW M5X14
50	AMP 768 PRO E50	COVER
51	AMP 768 PRO E51	COVER
52	AMP 768 PRO E52	SCREW M4X12
53	AMP 768 PRO E53	PLUG CAP
54	AMP 768 PRO E54	CLICK SPRING
55	AMP 768 PRO E55	PLUG COVER
56	AMP 768 PRO E56	SPARK PLUG
57	AMP 768 PRO E57	SCREW M5X20
58	AMP 768 PRO E58	GASKET
59	AMP 768 PRO E59	MUFFLER COMP.
60	AMP 768 PRO E60	SCREW M5X50-10.9
61	AMP 768 PRO E61	CYLINDER
62	AMP 768 PRO E62	CYLINDER WASHER
63	AMP 768 PRO E63	PISTON RING
64	AMP 768 PRO E64	PISTON
65	AMP 768 PRO E65	PISTON PIN
66	AMP 768 PRO E66	NEEDLE BEARING
67	AMP 768 PRO E67	PISTON PIN CIRCLCT
68	AMP 768 PRO E68	FUEL TANK LID
69	AMP 768 PRO E69	GASKET
70	AMP 768 PRO E70	AIRINLET MOUTH
71	AMP 768 PRO E71	INSIDE COVER
72	AMP 768 PRO E72	CASING
73	AMP 768 PRO E73	CHAIN
74	AMP 768 PRO E74	FUEL PIPE
75	AMP 768 PRO E75	FUEL PIPE
76	AMP 768 PRO E76	PLUG
77	AMP 768 PRO E77	CLEANER
78	AMP 768 PRO E78	FUEL TANK LID
79	AMP 768 PRO E79	SCREW M5X16
80	AMP 768 PRO E80	STARTER PULLEY ASSY
81	AMP 768 PRO E81	STARTER

TANK & PUMP SPARE PARTS DIAGRAM OF SPRAYER AMP-768-PRO | AMP-968-PRO



TANK & PUMP SPARE PARTS LIST OF SPRAYER AMP-768-PRO | AMP-968-PRO

PART NO.	PART NAME
AMP-768-PRO-P01	Chemical Container
AMP-768-PRO-P02	Filter
AMP-768-PRO-P03	Gasket
AMP-768-PRO-P04	Container Cover
AMP-768-PRO-P05	Chain Holder
AMP-768-PRO-P06	Strap
AMP-768-PRO-P07	Gasket
AMP-768-PRO-P08	Screw
AMP-768-PRO-P09	Spring Washer
AMP-768-PRO-P10	Screw
AMP-768-PRO-P11	Washer
AMP-768-PRO-P12	Screw
AMP-768-PRO-P13	Drain Cup
AMP-768-PRO-P19	Frame
AMP-768-PRO-P20	Pad
AMP-768-PRO-P23	Right Stand
AMP-768-PRO-P24	Left Stand
AMP-768-PRO-P26	Fixed Plate
AMP-768-PRO-P28	Stop Switch
AMP-768-PRO-P32	Cord Comp
AMP-768-PRO-P34	Throttle Wire
AMP-768-PRO-P34-1	Throttle Lever
AMP-768-PRO-P39	Engine Stand
AMP-768-PRO-P46	Joint S
AMP-768-PRO-P46-1	Joint-L
AMP-768-PRO-P47	Crank Case
AMP-768-PRO-P48	Bearing

PART NO.	PART NAME
AMP-768-PRO-P50	Shaft
AMP-768-PRO-P51	Bearing
AMP-768-PRO-P52	O-Ring
AMP-768-PRO-P53	Steel Pipe
AMP-768-PRO-P54	Gasket
AMP-768-PRO-P55	Drum Case
AMP-768-PRO-P56	Drum Clutch
AMP-768-PRO-P57	Bearing
AMP-768-PRO-P58	Bearing
AMP-768-PRO-P60	Gear Shaft and Gear
AMP-768-PRO-P61	Bearing
AMP-768-PRO-P62	O-Ring
AMP-768-PRO-P63	Oil Inlet Cup
AMP-768-PRO-P64	Crankcase Cover
AMP-768-PRO-P64-1	O-Ring
AMP-768-PRO-P66	O-Ring
AMP-768-PRO-P67	Oil Glass
AMP-768-PRO-P68	O-Ring
AMP-768-PRO-P69	Drain Plug
AMP-768-PRO-P70	Oil Seal
AMP-768-PRO-P70-1	Oil Seal
AMP-768-PRO-P71	O-Ring
AMP-768-PRO-P72	Adjusting Ring
AMP-768-PRO-P73	Grease Ring
AMP-768-PRO-P74	V-Packing Upper Seal
AMP-768-PRO-P75	V-Packing
AMP-768-PRO-P77	Packing Seat
AMP-768-PRO-P78	Cylinder
AMP-768-PRO-P79+80	Grease Cup

PART NO.	PART NAME
AMP-768-PRO-P81	Valve Assy
AMP-768-PRO-P82	Suction Chamber
AMP-768-PRO-P83	Clip-L
AMP-768-PRO-P83-1	Clip-S
AMP-768-PRO-P84	Suction Hose
AMP-768-PRO-P85	Outlet Chamber
AMP-768-PRO-P86	Valve Seat
AMP-768-PRO-P88	Pressure Valve
AMP-768-PRO-P89	Pressure Valve Rod
AMP-768-PRO-P90	Spring
AMP-768-PRO-P93	Relief Valve Assy
AMP-768-PRO-P94	Nut
AMP-768-PRO-P95	Pressure Valve Screw
AMP-768-PRO-P96	Pressure Adjusting
AMP-768-PRO-P97	Overflow Hose
AMP-768-PRO-P99	Plunger
AMP-768-PRO-P100	High Pressure Hose
AMP-768-PRO-P101	Cylinder
AMP-768-PRO-P102	Suction Chamber
AMP-768-PRO-P103	Outlet Chamber
AMP-768-PRO-P104	Suction Hose
AMP-768-PRO-P105	High Pressure Hose
AMP-768-PRO-P107	Hose Pipe Handle
AMP-768-PRO-P108	Roller
AMP-768-PRO-P109	Ball Cock
AMP-768-PRO-P111	Spray Rod (SG101-C)
AMP-768-PRO-P123	Fixed Plate

INSPECTION & MAINTENANCE

For safety use, make sure the machine is cleaned every three-months. Before working, make sure to inspect the filter and the nozzle, and ensure there is no impurity. After working, make sure there is no water in the pump and the hose.

If the machine needs to be repaired in the guarantee period, please return the machine to the shop. You need to provide the certificate of purchase in order to repair or get the substitute.

Before Packing, the machine should be cleaned, then use closed packaging, packaging should be firm. Store the machine in dry place.

For transportation safety. The machine should comply with ISTA.



Meaning of crossed - out wheeled dustbin:

Do not dispose of electrical machines as unsorted municipal waste, use separate collection facilities.

If electrical machines are disposed of in landfills or dumps, hazardous substances can leak into the groundwater and get into the food chain, damaging your health and well-being.

When replacing old machines with new ones, the retailer is legally obligated to take back your old machine for disposals at least free of charge.

Warranty Card

CUSTOMER COPY



Purchaser's Name & Address

Date of Delivery

Product Name

Portable Power Sprayer

AMP-768-PRO 4S AMP-768-PRO-4S

Product Serial No.

Dealer's Office Seal

Dealer Sign _____

Customer Sign. _____

Invoice / DN No.

I/We accept the terms and conditions of Warranty as in the Warranty Card.

Warranty Card

DEALER'S COPY



Purchaser's Name & Address

Date of Delivery

Product Name

Portable Power Sprayer

AMP-768-PRO 4S AMP-768-PRO-4S

Product Serial No.

Dealer's Office Seal

Dealer Sign _____

Customer Sign. _____

Invoice / DN No.

I/We accept the terms and conditions of Warranty as in the Warranty Card.

Warranty Card

COMPANY COPY



Purchaser's Name & Address

Date of Delivery

Product Name

Portable Power Sprayer

AMP-768-PRO 4S AMP-768-PRO-4S

Product Serial No.

Dealer's Office Seal

Dealer Sign _____

Customer Sign. _____

Invoice / DN No.

I/We accept the terms and conditions of Warranty as in the Warranty Card.

1. **LIMITED WARRANTY PERIOD** : For a period of six months from the date of Sale / delivery of the product which ever is earlier. 2. **LIMITED WARRANTY OBLIGATION** : Replacement of defective part(s) by authorized dealer are free of charges. If found defective by reasons of defective material / poor workmanship, parts will be replaced and there will be no value re-imburement. 3. **TERMS & CONDITIONS** : a. Claims under warranty will be accepted on submission of Warranty Card duly filled and stamped by authorized dealer together with the original purchase document. : b. Shipping / transportation / Incidental charges incurred in replacing defective parts under warranty shall be borne by the purchaser.

WARRANTY null & void if

- (i) Lack of maintenance, (ii) Incorrect use of the machine or tampering, (iii) Use of non-genuine spare parts, (iv) Usage of acids, solvents, or any flammable materials, (v) Non-usage of filter water / clear water / soft water & using water above 40°C temperature, (vi) While using the pressure washers to draw water which is contaminated with dust & solvents (eg. paint thinners, gasoline, oil, etc.), (vii) Repair done by unauthorized service people, (viii) Those parts subject to wear & tear due to normal operations and plastic parts, rubber items etc, (ix) Loose connections, faulty electrical fixtures & fluctuations in power supply.
4. Should any failure occur during or after the warranty period, customer does not have the right to interrupt payment / price discount.
5. Incidental or consequential damages like inconvenience commercial loss, loss of tie, mental agony etc.
6. Loss of any nature due to operation or non-operation is not covered under warranty.
7. All free service are at Dealer's service point only.
8. Warranty ceases if service is not done periodically.
9. The attached card should be completed and returned to Ratnagiri Impex Pvt. Ltd. for registration immediately after sale / delivery.
10. The warranty is void unless you register the warranty card with Ratnagiri Impex Pvt. Ltd.
11. The decision of Ratnagiri Impex Pvt. Ltd., in settling the warranty is final in all respects.
12. All disputes are subject to Bangalore Courts Jurisdiction

1. **LIMITED WARRANTY PERIOD** : For a period of six months from the date of Sale / delivery of the product which ever is earlier. 2. **LIMITED WARRANTY OBLIGATION** : Replacement of defective part(s) by authorized dealer are free of charges. If found defective by reasons of defective material / poor workmanship, parts will be replaced and there will be no value re-imburement. 3. **TERMS & CONDITIONS** : a. Claims under warranty will be accepted on submission of Warranty Card duly filled and stamped by authorized dealer together with the original purchase document. : b. Shipping / transportation / Incidental charges incurred in replacing defective parts under warranty shall be borne by the purchaser.

WARRANTY null & void if

- (i) Lack of maintenance, (ii) Incorrect use of the machine or tampering, (iii) Use of non-genuine spare parts, (iv) Usage of acids, solvents, or any flammable materials, (v) Non-usage of filter water / clear water / soft water & using water above 40°C temperature, (vi) While using the pressure washers to draw water which is contaminated with dust & solvents (eg. paint thinners, gasoline, oil, etc.), (vii) Repair done by unauthorized service people, (viii) Those parts subject to wear & tear due to normal operations and plastic parts, rubber items etc, (ix) Loose connections, faulty electrical fixtures & fluctuations in power supply.
4. Should any failure occur during or after the warranty period, customer does not have the right to interrupt payment / price discount.
5. Incidental or consequential damages like inconvenience commercial loss, loss of tie, mental agony etc.
6. Loss of any nature due to operation or non-operation is not covered under warranty.
7. All free service are at Dealer's service point only.
8. Warranty ceases if service is not done periodically.
9. The attached card should be completed and returned to Ratnagiri Impex Pvt. Ltd. for registration immediately after sale / delivery.
10. The warranty is void unless you register the warranty card with Ratnagiri Impex Pvt. Ltd.
11. The decision of Ratnagiri Impex Pvt. Ltd., in settling the warranty is final in all respects.
12. All disputes are subject to Bangalore Courts Jurisdiction

1. **LIMITED WARRANTY PERIOD** : For a period of six months from the date of Sale / delivery of the product which ever is earlier. 2. **LIMITED WARRANTY OBLIGATION** : Replacement of defective part(s) by authorized dealer are free of charges. If found defective by reasons of defective material / poor workmanship, parts will be replaced and there will be no value re-imburement. 3. **TERMS & CONDITIONS** : a. Claims under warranty will be accepted on submission of Warranty Card duly filled and stamped by authorized dealer together with the original purchase document. : b. Shipping / transportation / Incidental charges incurred in replacing defective parts under warranty shall be borne by the purchaser.

WARRANTY null & void if

- (i) Lack of maintenance, (ii) Incorrect use of the machine or tampering, (iii) Use of non-genuine spare parts, (iv) Usage of acids, solvents, or any flammable materials, (v) Non-usage of filter water / clear water / soft water & using water above 40°C temperature, (vi) While using the pressure washers to draw water which is contaminated with dust & solvents (eg. paint thinners, gasoline, oil, etc.), (vii) Repair done by unauthorized service people, (viii) Those parts subject to wear & tear due to normal operations and plastic parts, rubber items etc, (ix) Loose connections, faulty electrical fixtures & fluctuations in power supply.
4. Should any failure occur during or after the warranty period, customer does not have the right to interrupt payment / price discount.
5. Incidental or consequential damages like inconvenience commercial loss, loss of tie, mental agony etc.
6. Loss of any nature due to operation or non-operation is not covered under warranty.
7. All free service are at Dealer's service point only.
8. Warranty ceases if service is not done periodically.
9. The attached card should be completed and returned to Ratnagiri Impex Pvt. Ltd. for registration immediately after sale / delivery.
10. The warranty is void unless you register the warranty card with Ratnagiri Impex Pvt. Ltd.
11. The decision of Ratnagiri Impex Pvt. Ltd., in settling the warranty is final in all respects.
12. All disputes are subject to Bangalore Courts Jurisdiction



ratnagiri impex
BRINGING THE BEST TO YOU

1st Free Service Coupon

ISO 9001-2015
CERTIFIED COMPANY

FREE SERVICE COUPON (30 Days / 30 hrs (Which ever is earlier))

Model
Portable Power Sprayer AMP-768-PRO 4S AMP-968-NEO-4S

PDI Date

Serial Number

Service No.

Purchase bill no.

Date

Dealer's Office Seal

Dealer Signature.....

Customer Signature.....

Conditions: Operations listed have been performed to my entire satisfaction without any labour charges. Only consumables were charged.



agriculture | horticulture | sericulture | plantations | forestry | garden | health care

WARRANTY AND FREE SERVICE COUPON



ratnagiri impex
BRINGING THE BEST TO YOU

2nd Free Service Coupon

ISO 9001-2015
CERTIFIED COMPANY

FREE SERVICE COUPON (60 Days / 60 hrs (Which ever is earlier))

Model
Portable Power Sprayer AMP-768-PRO 4S AMP-968-NEO-4S

PDI Date

Serial Number

Service No.

Purchase bill no.

Date

Dealer's Office Seal

Dealer Signature.....

Customer Signature.....

Conditions: Operations listed have been performed to my entire satisfaction without any labour charges. Only consumables were charged.



agriculture | horticulture | sericulture | plantations | forestry | garden | health care

WARRANTY AND FREE SERVICE COUPON



ratnagiri impex
BRINGING THE BEST TO YOU

3rd Free Service Coupon

ISO 9001-2015
CERTIFIED COMPANY

FREE SERVICE COUPON (90 Days / 120 hrs (Which ever is earlier))

Model
Portable Power Sprayer AMP-768-PRO 4S AMP-968-NEO-4S

PDI Date

Serial Number

Service No.

Purchase bill no.

Date

Dealer's Office Seal

Dealer Signature.....

Customer Signature.....

Conditions: Operations listed have been performed to my entire satisfaction without any labour charges. Only consumables were charged.



agriculture | horticulture | sericulture | plantations | forestry | garden | health care

WARRANTY AND FREE SERVICE COUPON



Small Maintenance. Big Savings.



Small Maintenance. Big Savings.



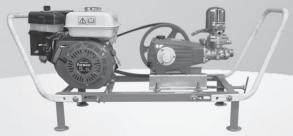
Small Maintenance. Big Savings.

Do's & Don'ts

- Always read the instruction manual supplied along with the equipments and understand the correct installation and operating procedures before attempting to use the equipments.
- It is important to use the personal protection equipments such as head helmet with visor, ear defenders, goggles, safety gloves, cut resistant shoes, trousers and jackets while operating potentially dangerous machines.
- Avoid untrained persons using the equipments. Children must not be allowed to handle these equipments.
- Always use genuine spares and accessories in repairs and usage to derive maximum life of the equipments.
- Always keep the equipments in good working condition to minimise loss of output as well as to reduce the pollution and save the environment.
- Do not use the machine within range of persons unless they wear protective clothing.
- Do not operate the machine when fatigued or under the influence of alcohol or drugs.
- When the machine is running, please maintain a constant water supply. Without water circulation will damage the sealing rings of the machine.
- For more query kindly contact for our Service Center/Dealer/ franchise

Agrimate Army For Pest Control

ANY WHERE - ANY TIME - ANY CROP




AGRIMATE[®]
Maximum Power - Super Economy

RATNAGIRI IMPEX PVT LTD
Annapurna House, #1/1G, 7th Cross, New Guddadahalli
Mysore Road, Bangalore-560 026
Customer Care: 1800 425 3036
email: info@ratnagiriimpex.com



Marketed by:
 **ratnagiri**
impex
BRINGING YOU THE FUTURE... NOW

www.ratnagiriimpex.com

AN ISO 9001:2015 CERTIFIED COMPANY