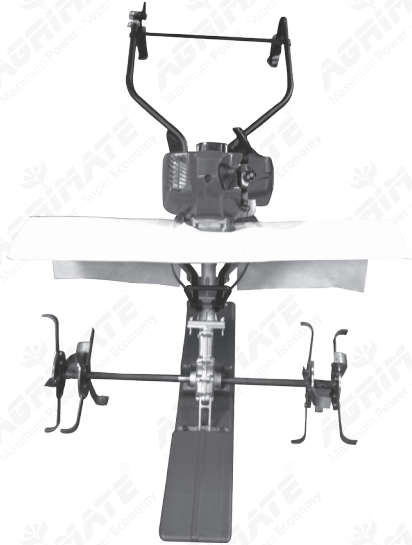


User Manual

AMWL-432 ROTARY POWER WEEDER WET LAND



DISCLAIMER: DUE TO CONSTANT UPGRADATION, FEATURES AND SPECIFICATIONS ARE SUBJECT TO CHANGE WITHOUT NOTICE



**BEFORE OPERATING THIS MACHINE,
PLEASE READ THESE INSTRUCTIONS CAREFULLY**

SAFETY PRECAUTIONS

NOTE: These instructions are for your protection. Please read them carefully.

TRAINING

Before using your for the first time, read the entire Owner's Manual carefully. It is important to be thoroughly familiar with the controls and the proper use of the equipment.

Never allow children to operate the equipment. Don't let friends or neighbors use your weeder without proper instruction. Keep the area of operation clear of all persons, particularly small children, and pets.

PREPARATION

Thoroughly inspect the area where the equipment is to be used and remove all foreign objects.

Do not operate the equipment without wearing adequate outer garments. Wear footwear which will improve footing on slippery surfaces.

Handle fuel with care; it is highly flammable.

- a) Use an approved fuel container.
- b) Never add fuel to a running or hot engine.
- c) Never fill fuel tank indoors.
- d) Replace gasoline cap securely and clean up spilled fuel before restarting.

Never attempt to make any adjustments while the engine is running (except where specifically recommended in this manual.)

OPERATION

1. Keep hands and feet away from rotating tines.
2. Use extreme caution when operating on or crossing gravel drives, walks, roads.
3. If you should strike a foreign object, stop the engine. Disconnect the spark plug wire, and keep the wire away from the plug to prevent accidental starting. Thoroughly inspect the tiller for any damage, and repair the damage before restarting and operating the tiller.
4. Exercise caution to avoid slipping or falling.
5. If the unit should start to vibrate abnormally, stop the engine and check immediately for the cause. Vibration is generally a warning of trouble.

6. Stop the engine whenever you leave the operating position. Also disconnect spark plug wire before unclogging the tines and when making any repairs, adjustments, and inspections.
7. Take all possible precautions whenever you leave the machine unattended. Always stop the engine. Never leave engine unattended while running.
8. Before cleaning, repairing, or inspecting, shut off the engine and make certain all moving parts have stopped.
9. NEVER run engine indoors. Exhaust fumes contain CARBON MONOXIDE which is an ODORLESS and DEADLY POISONOUS GAS.
10. Never operate the tiller without proper guards, plates, or other safety protective devices in place.
11. Keep children and pets away from the tiller while it is running.
12. Do not overload the machine's capacity by attempting to till too deep at too fast a rate.
13. Never allow bystanders near unit.
14. Never operate the tiller without good visibility or light.
15. Be careful during cleaning not to get the engine or start switch wet, as this may cause the electrical system to short circuit. If the engine or switch becomes wet, dry before use.

MAINTENANCE & STORAGE

Keep machine in safe working condition. Check all fasteners at frequent intervals for proper tightness. Never store the machine with fuel in the fuel tank inside a building where ignition sources are present such as hot water and space heaters, clothes dryers, etc. Allow the engine to cool before storing in any enclosure.

Always refer to the Owner's Manual for important details if the tiller is to be stored for any extended period.

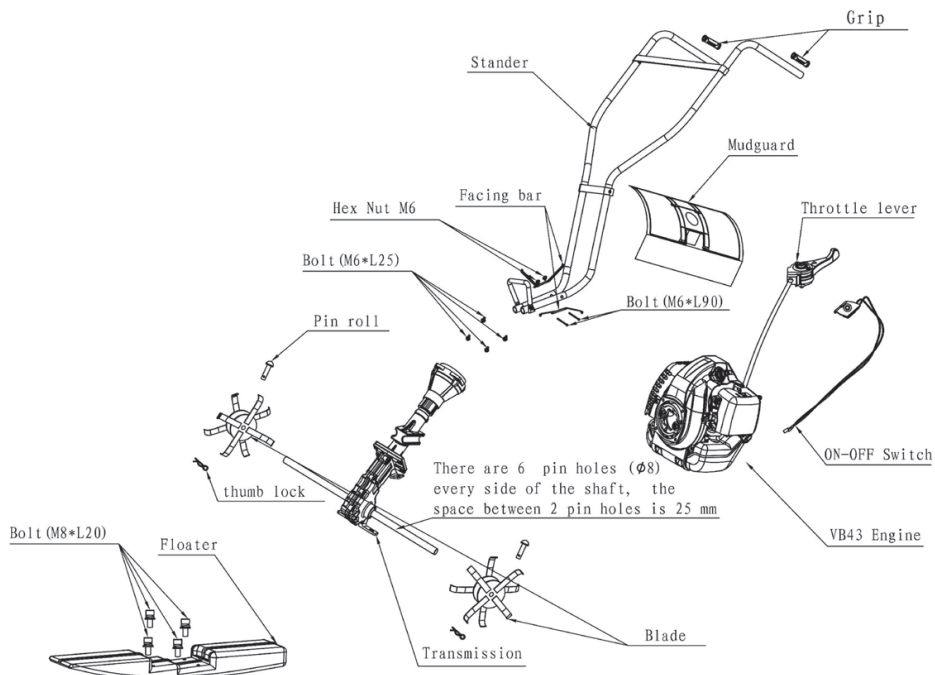
WHAT'S INSIDE THE SHIPPING CARTON

Take a minute or two to familiarize yourself with each component of the WEEDER listed below. The only tool you'll need to assemble the E-Z Tiller is an allen wrench, and we've included one.

Contents of Shipping Carton

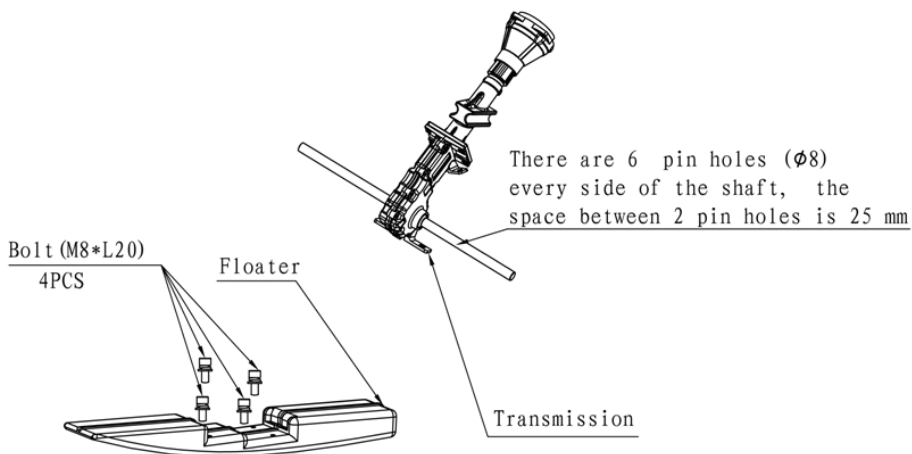
- 1 - r Frame
- 1 - Engine
- 4 - Tines
- 2 - Snap Pins
- 1 - Owner's Manual
- 1 - Allen Head Wrench tool kit
- 1 - float

DIAGRAM OF AMWL-432

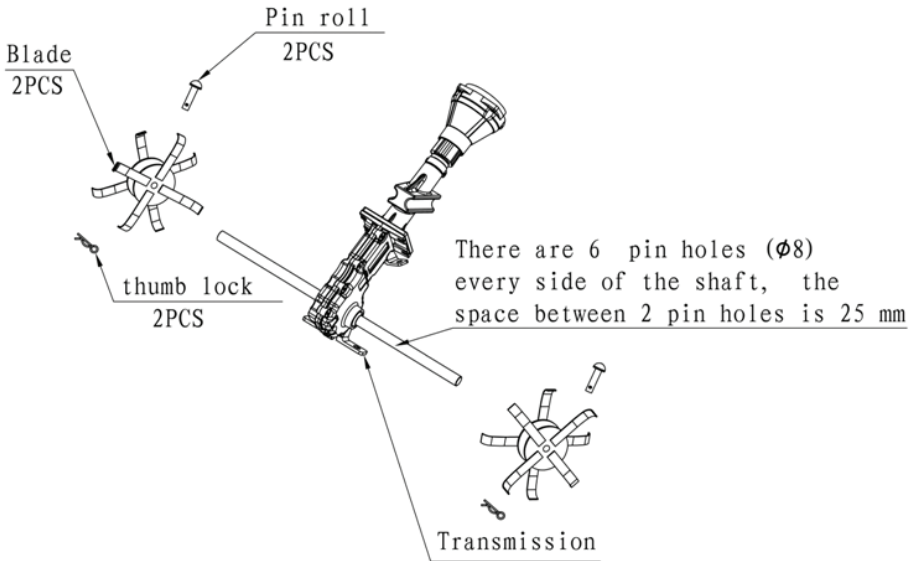


PUTTING IT ALL TOGETHER

1. Mounting the floater by M8*L20 bolt 4pcs.



2. Mounting the cutting blade on the shaft by pin set .



Before assemble

Packging

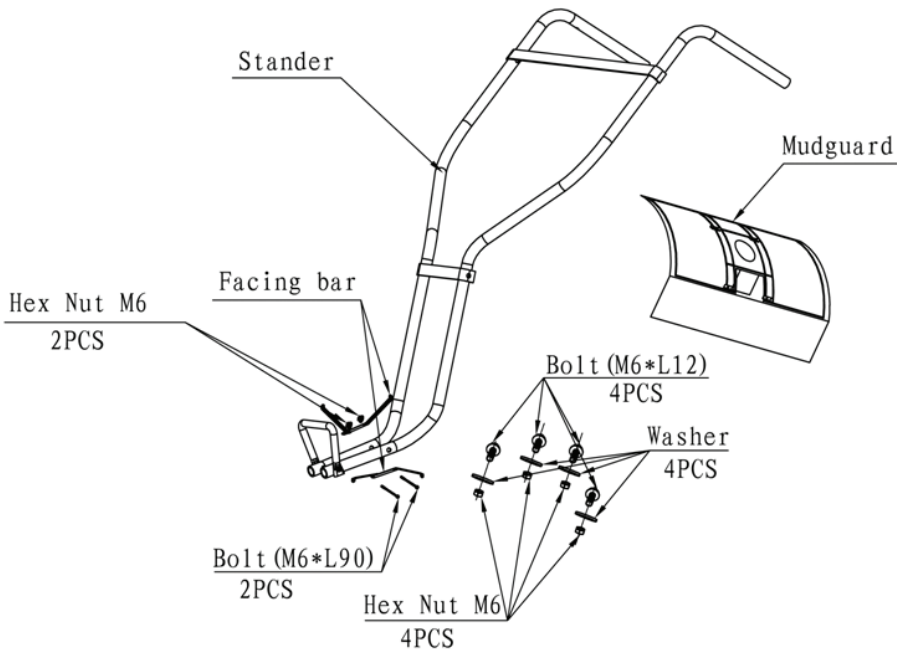


They are must be aligning

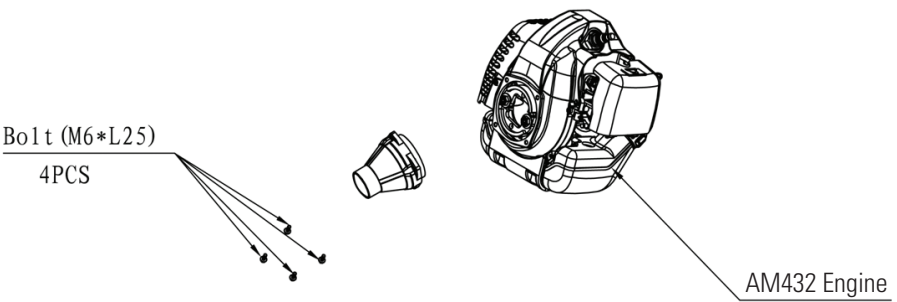
Assembling

Max.

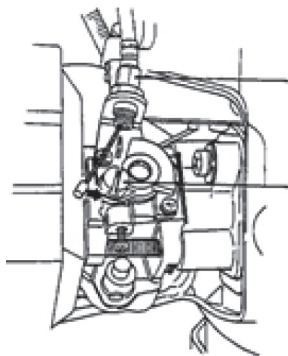
3. Put the handle and mudguard to the connector, fix the left supporter , right supporter, handle to the connector by M6*L90 bolts and nut , then fix the mudguard to the left supporter and right supporter by M6*L12 bolts, M6 nut, and washer.



4. Mounting the engine to by the M6*L25 bolts



CONNECTING THE THROTTLE LINKAGE

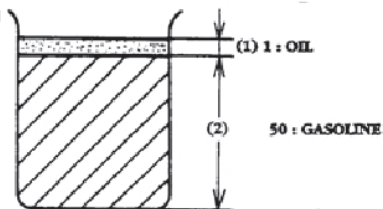


- a. Slide the throttle wire through the cable adjuster . Line up the "slotted" swivel with the wire, making sure the hole for the wire end is opposite the cable adjuster. (See arrow.)
- b. Once the throttle wire is attached to the carburetor, locate the other end of the throttle wire and insert the wire end into the throttle lever hole. While pulling on the throttle wire (outer part) insert the throttle wire sleeve -into the hole in the throttle lever.

OPERATING INSTRUCTIONS

1. Fuel

Fuel for this engine requires a mix of leaded or unleaded gasoline and 2 cycle engine oil. Never operate the weeder with unmixed or straight gasoline as it will cause rapid and permanent damage to the engine. Mix your gasoline with a high quality 2-cycle oil that is made to mix at one specific ratio of 50:1. We recommend that you select a 2 cycle oil that meets or exceeds FC requirements.



▲ CAUTION

Do not use gasohol or gasoline that contains alcohol. Always use fresh gasoline. Never attempt to mix the gasoline and oil in the fuel tank of the engine. Always mix your gasoline in a clean gasoline container. Once mixed, shake the container vigorously so the oil mixes with the gasoline.

OPERATING CONTROLS

NOTE. Fig. 11 shows the location of the operating controls of your WEEDER. For your safety, we strongly recommend that you become familiar with their functions before using the machine.

WARNING- KEEP ARMS AND LEGS AWAY FROM ROTATING TINES. ROTATING TINES CAN CAUSE INJURY.

- a. (FIG. 11) Throttle lever (1) controls the engine speed and tine rotation. Your E-Z Tiger is equipped with a centrifugal clutch that engages the tine drive system when the engine speed is increased. When the throttle lever is released, the engine speed slows down, and the tines will automatically stop.
- b. (FIG. 11A) Stop switch (2) has two positions, one allowing the engine to run, the other shutting it off immediately.
- c. (FIG. 11A) Start button (3) is used to activate the built-in starter motor, which starts the engine.
- d. (FIG. 11B) Priming bulb (4), when pressed, delivers fuel from the tank to the carburetor. Use priming bulb for cold starts or if engine ever runs completely out of fuel.
- e. (FIG. 11B) Fuel injection button (5) forces fuel from the carburetor to the combustion chamber for cold starts. Used after carburetor is primed.

OPERATING PROCEDURES

Before Starting

1. Fill the fuel tank (to $\frac{1}{8}$ to $\frac{1}{2}$ inch below bottom of fill neck) with freshly mixed fuel. Replace tank cap. Never use fuel mix that may be stale from long periods of storage.

NOTE: The engine will only start when the "stop switch" is in the "on" position.

Cold Starting

(FIG. 11 B) Depress the priming bulb (4) several times until the fuel flows through the bulb into the carburetor. Depress the fuel

injection button (5) ONCE, which transfers the fuel from the carburetor to the combustion chamber. Turn the stop switch (2) to the "on position" and press the "start button" (3).

CAUTION: Do not depress the start button for more than 10 seconds continuously, as this will cause premature power drainage of the batteries. Warm the engine by running at idle speed for 2 to 3 minutes.

Warm Starting

(FIG. 11) When the engine is warmed up, it is not necessary to depress the priming bulb and fuel injection button. Doing this would cause the engine to flood and make starting difficult. The correct procedure is to simply rotate the stop switch (2) to the "on position" and press the "start button" (3).

If The Engine Does Not Start

1. If the engine starts but does not continue to run, repeat steps under Cold Starting.
2. If the engine cranks but does not fire, squeeze the throttle lever and repeat steps under Warm Starting.

⚠ CAUTION!

With the throttle lever depressed, the engine will run at a high enough RPM to turn the tines. This could propel the unit forward. In this case, tilt the unit back onto the stabilizer bar in order to raise the tines off the ground!

3. If the starter does not make any noise when the button is pushed, either the stop switch isn't in the "on" position or the batteries need to be charged. Repeat charging steps on p. 8.
4. If your WEEDER is equipped with the optional recoil starter, follow the same steps as above except pull the recoil starter handle briskly instead of pressing the start button.
5. NOTE: When the engine stalls from lack of fuel, repeat the "Cold Starting" procedures.

Stopping The Engine

(FIG. 11 & 11A) Decrease the engine speed by releasing the throttle lever (1), then turn the stop switch (2) to the "OFF" position.

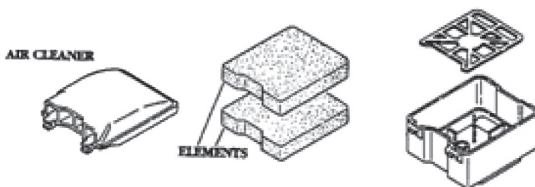
USING WEEDER FOR THE FIRST TIME

- a) With a firm grip on the handles, squeeze the throttle lever against the hand grip. As the tines make contact with the ground, hold the unit back so that the tines begin to dig. If the tilling depth is not correct (too high or too low) the stabilizer bar may be adjusted as follows:
- b) Move the STOP switch to the OFF position and remove the spark plug cap. CAUTION: Never make any adjustments to the stabilizer bar, engine, or tines while the engine is running.
- c) Remove the snap pin and clevis pin securing the stabilizer bar (see FIG. 9). Adjust the stabilizer bar up or down according to the desired depth. NOTE: Move the stabilizer bar up for a more shallow cut or downward for a deeper cut. Reinstall the clevis pin and secure with the snap pin.
- d) Start the engine and recheck the depth.

If the depth is still unsuitable, repeat the above steps.

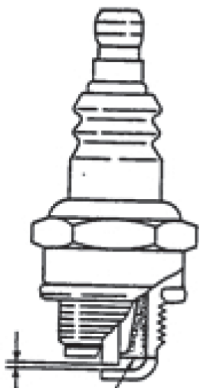
MAINTENANCE

FIG.13



1. (FIG. 13) Air Cleaner – The air cleaner elements must be removed and cleaned every twenty-five hours or at the beginning of each season. More frequent cleaning is recommended under very dusty conditions. Thoroughly wash the elements in liquid detergent and water. Press the elements in a rag until they are completely dry, saturate them in 2-cycle oil or the equivalent. Squeeze the elements to distribute the oil and to remove any excess oil. Replace elements and install cover.
2. (FIG. 14) Spark Plug - Clean and re-gap the spark plug after every twenty-five hours of operation. Before removing plug clean around plug base to prevent foreign material from entering the cylinder when the plug is removed. Set spark plug gap at .023 in. or 0.6mm.

SPARK PLUG



.023 in.
or
0.6mm
FIG.14

3. (FIGS. 15 & 16) Muffler/Exhaust Port/Cylinder
- At the end of each season (or after 25 hours of use) the muffler must be removed and cleaned to prevent carbon accumulation. At the same time, the exhaust port should be cleaned. After removing the muffler, crank the engine over until the piston completely covers the exhaust port. This will prevent any foreign material from entering the engine. Now clean the exhaust port using a wood scraper only (FIG. 16). At the same time, the cylinder cooling fins should be inspected and cleaned. If debris is collected in the cooling fins, the engine will run hot and this could result in serious engine damage. Use a wood scraper for cleaning the cylinder cooling fins (FIG. 15).

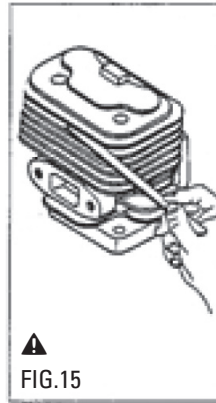


FIG.15

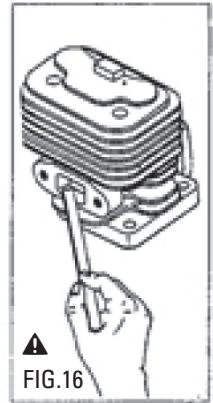


FIG.16

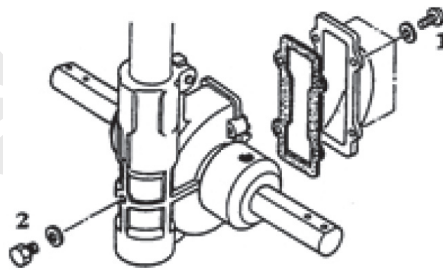


FIG.17

4. (FIG. 17) Tine Shaft/Gear Case - The tine shaft should be thoroughly cleaned and oiled with a multi-purpose oil after every twenty-five hours of operation. The tine shaft should also be lubricated prior to storage. Every 25 hours and/or at the beginning of each season, the gear case should be filled with grease. Remove the gear case cover by removing four screws (1) and the bolt (2). Fill the gear case with a lithium based multipurpose grease. Insert grease nipple into bolt hole of gear case. Squeeze tube until grease is level with the gear case gasket surface. Reinstall gear case cover with gasket and tighten bolts securely. Reinstall bolt with gasket and tighten securely.

CAUTION: Before making any inspections or repairs recommended in this manual, first make sure the istopí switch is in the off position and the spark plug cap is removed. These steps will prevent accidental starting which could result in injury.

5. General Maintenance Items - Good preventative maintenance habits will prolong the life of your E-Z Tiller. We recommend the following checks after each use: check screws, nuts, and bolts for tightness; check fuel lines and connections for leaks; inspect and clean fender, tines, and the gear case. (Note: When cleaning, avoid splashing water on the engine and stop switch.)

6. Tine Replacement - If rocks or other debris become lodged in tines, immediately stop the engine and clean. CAUTION: Before cleaning, make sure the stop switch is in the off position and the spark plug cap is removed. This will prevent accidental starting. DANGER- Tines are self-sharpening and will become quite sharp. Handle carefully. Tines will wear fairly evenly. If tines are being replaced because of wear, we recommend that all four tines are replaced at the same time. Refer to p. 7 for installation procedure.

7. (FIG. 18) Carburetor Idle Adjustment - The carburetor has been pre-adjusted at the factory and normally will not require further adjustment. If the engine does not run smoothly at idle speed, first clean the air cleaner element, fuel filter and check fuel lines. If they are okay, adjust the carburetor as follows.

- a) Start the engine and allow it to warm up for five minutes.
- b) Turn the idle speed adjustment screw (1) clockwise or counterclockwise (clockwise increases engine speed, counterclockwise decreases engine speed) to achieve the correct idling speed.
NOTE: If the engine speed is too high, the tines will rotate. If the engine speed is too low, the engine will stall.

NOTE: A stiff throttle wire may cause high idling speed. Oil/spray the wire when needed. If the wire is still stiff, it may need to be replaced.

(1) IDLE SPEED
ADJUSTMENT
SCREW

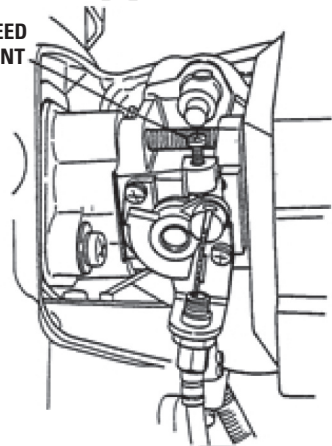


FIG.18

STORAGE

DANGER: Never store the WEEDER indoors with fuel in the tank. Gas fumes could be ignited by an open flame or pilot light, such as on a furnace, water heater, or clothes dryer. Handle gasoline carefully. It is highly flammable and careless handling could result in serious fire damage to persons and/or property. Always drain fuel outdoors, away from open flames, into an approved container.

1. It's a good idea to perform the following storage procedures at the end of the season or if your WEEDER won't be used for more than thirty days:
2. Remove all fuel from the fuel tank to prevent gum deposits from forming and causing possible malfunction of the engine. Drain fuel into an approved fuel container.
3. Start and run engine until it stops due to lack of gasoline.
4. Clean unit thoroughly, removing all dirt and debris from the engine, tines and gear case.
5. Remove tines and oil tine shaft Reinstall tines. (Refer to p. 5 for procedures).
6. Remove clevis pin and snap pin, then turn stabilizer bar 180 degrees for storage. Remove handle lock bolt. Carefully fold handles downward into storage position. Reinstall handle lock bolt (Refer to P. 4 for procedures). NOTE: To give you more space in your garage or shed, the WEEDER can be hung on a wall from the top of its rectangular tubing.
7. Store your WEEDER in a protected area for additional protection. CAUTION: Do not store your WEEDER or battery charger where temperatures could get below 25 degrees F (-32 degrees C) or above 125 degrees F (52 degrees C).

SPECIFICATIONS

Displacement	1.4 kw / 7500 RPM (42.7cc)
Starter System	recoil starter (easy starter)
Ignition System	CDI
Carburetion System	Diaphragm
Clutch System	Centrifugal
Drive System	Worm Gear (40:1 reduction)
Tine Width	Adjustable 75-100mm
Tine Diameter	314mm
Cultivating Depth	94mm
Dry Weight	18.0 kg
Fuel Tank Capacity	900 cc
Dimension of the machine	155*84*76cm
Dimension of package	box:113*26*54cm
Air Cleaner	Oiled Foam Elements (2)
Handle	2-piece folding
Stabilizer Bar	Standard
Carrying Handle	Standard

TROUBLE SHOOTING

Engine Won't Start

a. Engine does not turn over

- Switch not on - Check Start Switch

b. Engine turns over

- Incorrect Starting Procedure - See Page 8
- No spark on spark plug - Clean and re-gap plug (see pg 10) or replace
- Not enough fuel - Add fuel
- Fuel is old or incorrect - Replace with fresh fuel (see pg 7)
- Dirt in fuel tank - Clean fuel tank

Engine Lost Power

- Carbon on muffler - Clean (see pg 11)
- Too much oil in fuel - Replace with proper fuel
- Plugged air filter - Clean (see pg 11)
- Throttle is not open - Squeeze the throttle lever

Tines Won't Turn

- Incorrect Engine Installation - Reinstall engine (see pg 4)
- Foreign object lodged in tines - Clean Tines
- Engine speed too slow - See above (Engine Lost Power section.)

Tines Rotate when throttle is released

- Carburetor out of adjustment - Adjust idle speed (see pg 12)
- Stiff throttle wire - Spray / oil throttle wire

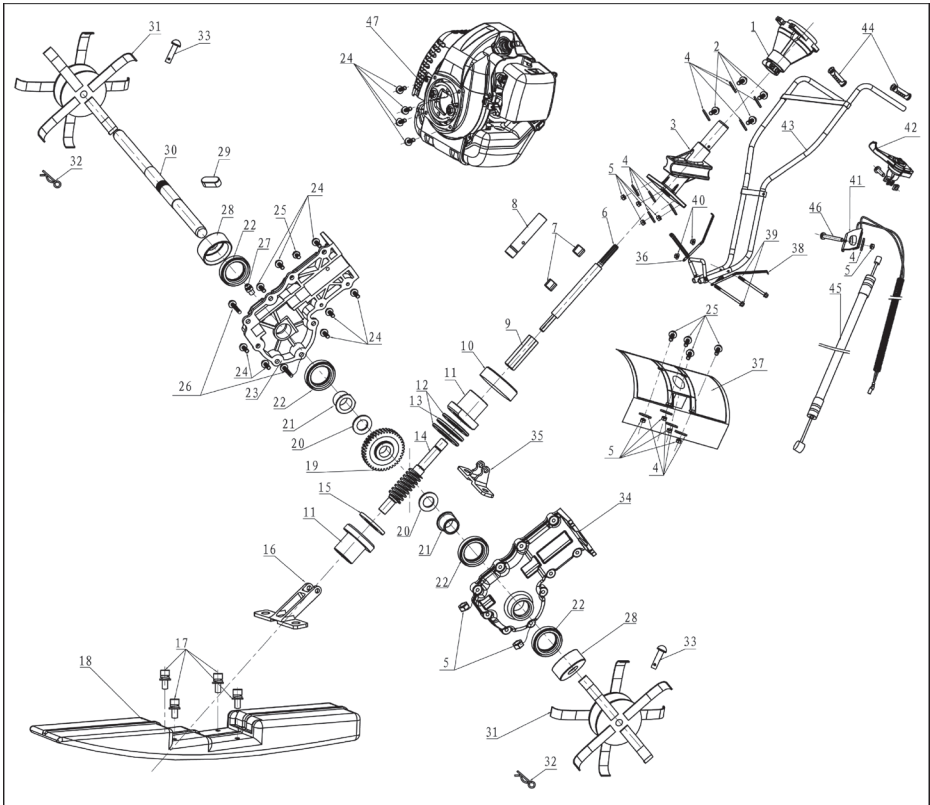
Unit does not till properly

- Incorrect tine installation - Reinstall tines (see pg 6)
- Incorrect stabilizer bar installation - Adjust depth (see pg 10)

Engine does not idle

- Carburetor out of adjustment - Adjust carburetor (see pg 13)

PLUGHING MACHINE ASSEMBLY



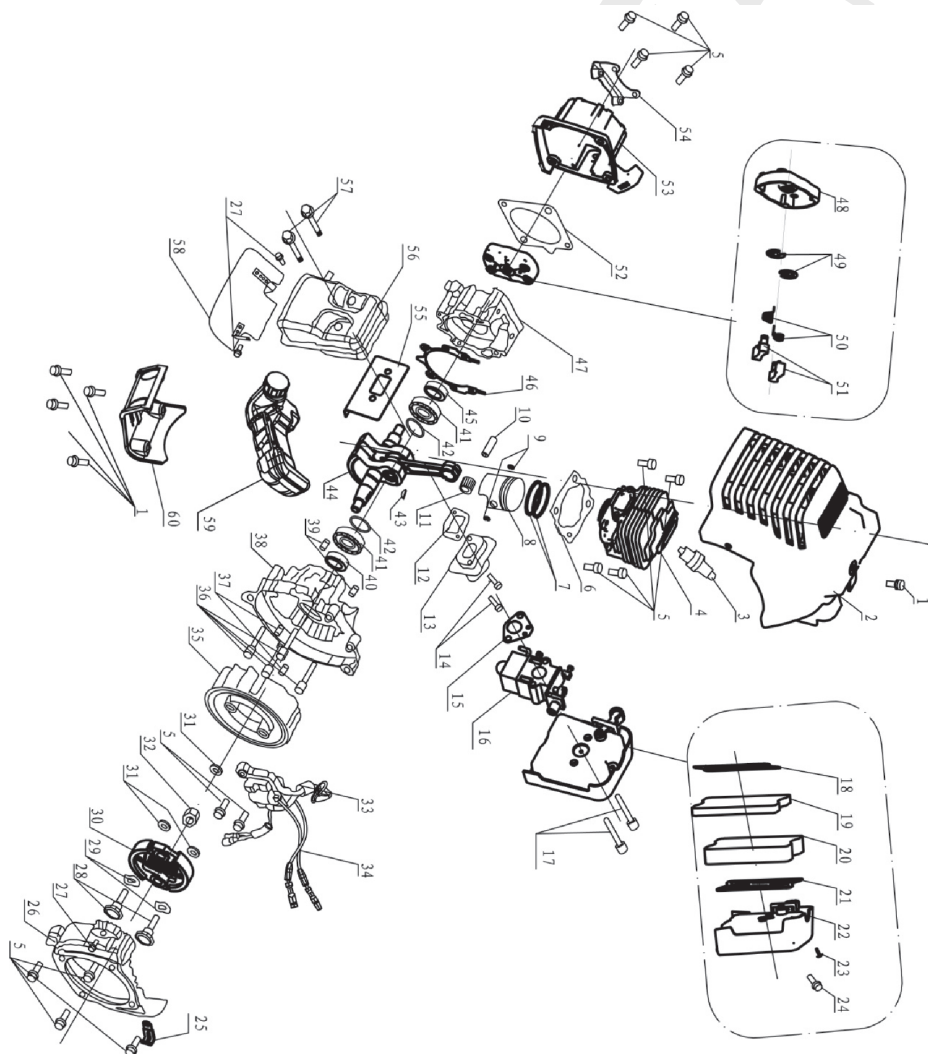
ROTARY POWER WEEDER WET LAND TRANSMISSION SPARE PARTS

SL. NO.	Part Number	Part Name
1	AMWL-432-1	Clutch case assembly
2	AMWL-432-2	Socket head bolt
3	AMWL-432-3	Connecting seat
4	AMWL-432-4	washer
5	AMWL-432-5	Nut
6	AMWL-432-6	Transmission shaft
7	AMWL-432-7	Ogally ass'y
8	AMWL-432-8	Aluminum pipe
9	AMWL-432-9	Connection shaft

10	AMWL-432-10	Oil Seal
11	AMWL-432-11	Copper spacer
12	AMWL-432-12	washer
13	AMWL-432-13	bearing
14	AMWL-432-14	Worm
15	AMWL-432-15	Washer
16	AMWL-432-16	Floater front holder
17	AMWL-432-17	socket cap screw
18	AMWL-432-18	Floater
19	AMWL-432-19	Worm wheel
20	AMWL-432-20	Washer
21	AMWL-432-21	Copper spacer
22	AMWL-432-22	Framework Oil Seal
23	AMWL-432-23	Right gearbox
24	AMWL-432-24	Hexagon nut with flange
25	AMWL-432-25	Hexagon nut with flange
26	AMWL-432-26	Hexagon nut with flange
27	AMWL-432-27	oil nozzle
28	AMWL-432-28	Protective sleeve for gearbox
29	AMWL-432-29	key
30	AMWL-432-30	worm-wheel shaft
31	AMWL-432-31	Blade
32	AMWL-432-32	Retaining pins
33	AMWL-432-33	Pin roll
34	AMWL-432-34	Left gearbox
35	AMWL-432-35	rear fixing skeleton
36	AMWL-432-36	right facing bar
37	AMWL-432-37	Mudguard
38	AMWL-432-38	left facing bar
39	AMWL-432-39	Hexagon nut with flange
40	AMWL-432-40	Hex flange lock nut
41	AMWL-432-41	The on-off switch
42	AMWL-432-42	Throttle lever

43	AMWL-432-43	Stander
44	AMWL-432-44	Grip
45	AMWL-432-45	Throttle cable
46	AMWL-432-46	socket cap screw
47	AMWL-432-47	Engine

AM432 ENGINE ASSEMBLY



ROTARY POWER WEEDER WET LAND ENGINE SPARE PARTS

SI.NO.	Part Number	Parts Name
1	AM432-1	bolt
2	AM432-2	cylinder cover
3	AM432-3	spark plug
4	AM432-4	cylinder
5	AM432-5	screw
6	AM432-6	cylinder gasket
7	AM432-7	piston ring
8	AM432-8	piston
9	AM432-9	clip
10	AM432-10	piston pin
11	AM432-11	needle cage
12	AM432-12	intake gasket
13	AM432-13	intake pipe
14	AM432-14	screw
15	AM432-15	carburetor gasket
16	AM432-16	carburetor
17	AM432-17	screw
18	AM432-18	mesh baffler
19	AM432-19	non-woven fabrics element
20	AM432-20	sponge element
21	AM432-21	baffler
22	AM432-22	air filter assembly
23	AM432-23	screw
24	AM432-24	screw
25	AM432-25	wire clamp
26	AM432-26	side cover
27	AM432-27	screw
28	AM432-28	bolt
29	AM432-29	elastic washer
30	AM432-30	cluth assembly

SI.NO.	Part Number	Parts Name
31	AM432-31	washer
32	AM432-32	nut
33	AM432-33	ignition coil
34	AM432-34	cable
35	AM432-35	fly wheel
36	AM432-36	screw
37	AM432-37	location pin
38	AM432-38	crankcase fly wheel side
39	AM432-39	laction pin
40	AM432-40	oil seal
41	AM432-41	bearing
42	AM432-42	o-ring
43	AM432-43	woodruff key
44	AM432-44	crankshaft assembly
45	AM432-45	oil seal
46	AM432-46	crankcase gasket
47	AM432-47	crankcase starter side
48	AM432-48	drive plate
49	AM432-49	washer
50	AM432-50	spring
51	AM432-51	pawl
52	AM432-52	starter gasket
53	AM432-53	starter assembly
54	AM432-54	fuel support
55	AM432-55	exhaust gasket
56	AM432-56	muffler
57	AM432-57	screw
58	AM432-58	muffler gasket
59	AM432-59	fuel tank assembly
60	AM432-60	fuel tank protector

INSPECTION & MAINTENANCE

For safety use, make sure the machine is cleaned every three-months. Before working, make sure to inspect the filter and the nozzle, and ensure there is no impurity. After working, make sure there is no water in the pump and the hose.

If the machine needs to be repaired in the guarantee period, please return the machine to the shop. You need to provide the certificate of purchase in order to repair or get the substitute.

Before Packing, the machine should be cleaned, then use closed packaging, packaging should be firm. Store the machine in dry place.

For transportation safety. The machine should comply with ISTA.



Meaning of crossed - out wheeled dustbin:

Do not dispose of electrical machines as unsorted municipal waste, use separate collection facilities.

If electrical machines are disposed of in landfills or dumps, hazardous substances can leak into the groundwater and get into the food chain, damaging your health and well-being.

When replacing old machines with new ones, the retailer is legally obligated to take back your old machine for disposals at least free of charge.

Warranty Card

CUSTOMER COPY



Purchaser's Name & Address

Product Name

AMWL-432 Rotary Power Weeder Wet Land

Product Serial No.

Invoice / DN No.

Date of Delivery

Dealer's Office Seal

Dealer Sign _____

Customer Sign. _____

I/We accept the terms and conditions of Warranty as in the Warranty Card.

Warranty Card

DEALER'S COPY



Purchaser's Name & Address

Product Name

AMWL-432 Rotary Power Weeder Wet Land

Product Serial No.

Invoice / DN No.

Date of Delivery

Dealer's Office Seal

Dealer Sign _____

Customer Sign. _____

I/We accept the terms and conditions of Warranty as in the Warranty Card.

Warranty Card

COMPANY COPY



Purchaser's Name & Address

Product Name

AMWL-432 Rotary Power Weeder Wet Land

Product Serial No.

Invoice / DN No.

Date of Delivery

Dealer's Office Seal

Dealer Sign _____

Customer Sign. _____

I/We accept the terms and conditions of Warranty as in the Warranty Card.

1. **LIMITED WARRANTY PERIOD** : For a period of six months from the date of Sale / delivery of the product which ever is earlier. 2. **LIMITED WARRANTY OBLIGATION** : Replacement of defective part(s) by authorized dealer are free of charges. If found defective by reasons of defective material / poor workmanship, parts will be replaced and there will be no value re-imbursalment. 3. **TERMS & CONDITIONS** : a. Claims under warranty will be accepted on submission of Warranty Card duly filled and stamped by authorized dealer together with the original purchase document. : b. Shipping / transportation / Incidental charges incurred in replacing defective parts under warranty shall be borne by the purchaser.

WARRANTY null & void if

- (i) Lack of maintenance, (ii) Incorrect use of the machine or tampering, (iii) Use of non-genuine spare parts, (iv) Usage of acids, solvents, or any flammable materials, (v) Non-usage of filter water / clear water / soft water & using water above 40°C temperature, (vi) While using the pressure washers to draw water which is contaminated with dust & solvents (eg. paint thinners, gasoline, oil, etc.), (vii) Repair done by unauthorized service people, (viii) Those parts subject to wear & tear due to normal operations and plastic parts, rubber items etc, (ix) Loose connections, faulty electrical fixtures & fluctuations in power supply.
4. Should any failure occur during or after the warranty period, customer does not have the right to interrupt payment / price discount.
 5. Incidental or consequential damages like inconvenience commercial loss, loss of tie, mental agony etc.
 6. Loss of any nature due to operation or non-operation is not covered under warranty.
 7. All free service are at Dealer's service point only.
 8. Warranty ceases if service is not done periodically.
 9. The attached card should be completed and returned to Ratnagiri Impex Pvt. Ltd. for registration immediately after sale / delivery.
 10. The warranty is void unless you register the warranty card with Ratnagiri Impex Pvt. Ltd.
 11. The decision of Ratnagiri Impex Pvt. Ltd., in settling the warranty is final in all respects.
 12. All disputes are subject to Bangalore Courts Jurisdiction

1. **LIMITED WARRANTY PERIOD** : For a period of six months from the date of Sale / delivery of the product which ever is earlier. 2. **LIMITED WARRANTY OBLIGATION** : Replacement of defective part(s) by authorized dealer are free of charges. If found defective by reasons of defective material / poor workmanship, parts will be replaced and there will be no value re-imbursalment. 3. **TERMS & CONDITIONS** : a. Claims under warranty will be accepted on submission of Warranty Card duly filled and stamped by authorized dealer together with the original purchase document. : b. Shipping / transportation / Incidental charges incurred in replacing defective parts under warranty shall be borne by the purchaser.

WARRANTY null & void if

- (i) Lack of maintenance, (ii) Incorrect use of the machine or tampering, (iii) Use of non-genuine spare parts, (iv) Usage of acids, solvents, or any flammable materials, (v) Non-usage of filter water / clear water / soft water & using water above 40°C temperature, (vi) While using the pressure washers to draw water which is contaminated with dust & solvents (eg. paint thinners, gasoline, oil, etc.), (vii) Repair done by unauthorized service people, (viii) Those parts subject to wear & tear due to normal operations and plastic parts, rubber items etc, (ix) Loose connections, faulty electrical fixtures & fluctuations in power supply.
4. Should any failure occur during or after the warranty period, customer does not have the right to interrupt payment / price discount.
 5. Incidental or consequential damages like inconvenience commercial loss, loss of tie, mental agony etc.
 6. Loss of any nature due to operation or non-operation is not covered under warranty.
 7. All free service are at Dealer's service point only.
 8. Warranty ceases if service is not done periodically.
 9. The attached card should be completed and returned to Ratnagiri Impex Pvt. Ltd. for registration immediately after sale / delivery.
 10. The warranty is void unless you register the warranty card with Ratnagiri Impex Pvt. Ltd.
 11. The decision of Ratnagiri Impex Pvt. Ltd., in settling the warranty is final in all respects.
 12. All disputes are subject to Bangalore Courts Jurisdiction

1. **LIMITED WARRANTY PERIOD** : For a period of six months from the date of Sale / delivery of the product which ever is earlier. 2. **LIMITED WARRANTY OBLIGATION** : Replacement of defective part(s) by authorized dealer are free of charges. If found defective by reasons of defective material / poor workmanship, parts will be replaced and there will be no value re-imbursalment. 3. **TERMS & CONDITIONS** : a. Claims under warranty will be accepted on submission of Warranty Card duly filled and stamped by authorized dealer together with the original purchase document. : b. Shipping / transportation / Incidental charges incurred in replacing defective parts under warranty shall be borne by the purchaser.

WARRANTY null & void if

- (i) Lack of maintenance, (ii) Incorrect use of the machine or tampering, (iii) Use of non-genuine spare parts, (iv) Usage of acids, solvents, or any flammable materials, (v) Non-usage of filter water / clear water / soft water & using water above 40°C temperature, (vi) While using the pressure washers to draw water which is contaminated with dust & solvents (eg. paint thinners, gasoline, oil, etc.), (vii) Repair done by unauthorized service people, (viii) Those parts subject to wear & tear due to normal operations and plastic parts, rubber items etc, (ix) Loose connections, faulty electrical fixtures & fluctuations in power supply.
4. Should any failure occur during or after the warranty period, customer does not have the right to interrupt payment / price discount.
 5. Incidental or consequential damages like inconvenience commercial loss, loss of tie, mental agony etc.
 6. Loss of any nature due to operation or non-operation is not covered under warranty.
 7. All free service are at Dealer's service point only.
 8. Warranty ceases if service is not done periodically.
 9. The attached card should be completed and returned to Ratnagiri Impex Pvt. Ltd. for registration immediately after sale / delivery.
 10. The warranty is void unless you register the warranty card with Ratnagiri Impex Pvt. Ltd.
 11. The decision of Ratnagiri Impex Pvt. Ltd., in settling the warranty is final in all respects.
 12. All disputes are subject to Bangalore Courts Jurisdiction



ratnagiri impex
BRIDGING THE FUTURE

1st Free Service Coupon

ISO 9001-2008
CERTIFIED COMPANY

FREE SERVICE COUPON (30 Days / 20 hrs (Which ever is earlier))

Model
AMWL-432 Rotary Power Weeder Wet Land

Serial Number

PDI Date

Purchase bill no.

Date

Service No.

Dealer's Office Seal

- Operations:
- Check and Test the Fuel Mixture.
 - Check and Clean the Air Filter
 - Check, Clean and Adjust the Spark plug
 - Check and Adjust the Carburetor Tuning
 - Check and Sharpen the cutting Tools
 - Start and Check the Noise, Vibration, Loosen / Fasteners etc.
 - Product familiarization on Usage
 - Routine maintenance and Storage

Dealer Signature.....

Customer Signature.....

Conditions: Operations listed have been performed to my entire satisfaction without any labour charges. Only consumables were charged.



agriculture | horticulture | sericulture | plantations | forestry | garden | health care

WARRANTY AND FREE SERVICE COUPON



ratnagiri impex
BRIDGING THE FUTURE

2nd Free Service Coupon

ISO 9001-2008
CERTIFIED COMPANY

FREE SERVICE COUPON (30 Days / 20 hrs (Which ever is earlier))

Model
AMWL-432 Rotary Power Weeder Wet Land

Serial Number

PDI Date

Purchase bill no.

Date

Service No.

Dealer's Office Seal

- Operations:
- Check and Test the Fuel Mixture.
 - Check and Clean the Air Filter
 - Check, Clean and Adjust the Spark plug
 - Check and Adjust the Carburetor Tuning
 - Check and Sharpen the cutting Tools
 - Start and Check the Noise, Vibration, Loosen / Fasteners etc.
 - Product familiarization on Usage
 - Routine maintenance and Storage

Dealer Signature.....

Customer Signature.....

Conditions: Operations listed have been performed to my entire satisfaction without any labour charges. Only consumables were charged.



agriculture | horticulture | sericulture | plantations | forestry | garden | health care

WARRANTY AND FREE SERVICE COUPON



ratnagiri impex
BRIDGING THE FUTURE

3rd Free Service Coupon

ISO 9001-2008
CERTIFIED COMPANY

FREE SERVICE COUPON (30 Days / 20 hrs (Which ever is earlier))

Model
AMWL-432 Rotary Power Weeder Wet Land

Serial Number

PDI Date

Purchase bill no.

Date

Service No.

Dealer's Office Seal

- Operations:
- Check and Test the Fuel Mixture.
 - Check and Clean the Air Filter
 - Check, Clean and Adjust the Spark plug
 - Check and Adjust the Carburetor Tuning
 - Check and Sharpen the cutting Tools
 - Start and Check the Noise, Vibration, Loosen / Fasteners etc.
 - Product familiarization on Usage
 - Routine maintenance and Storage

Dealer Signature.....

Customer Signature.....

Conditions: Operations listed have been performed to my entire satisfaction without any labour charges. Only consumables were charged.

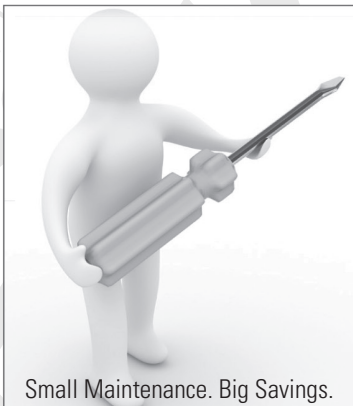


agriculture | horticulture | sericulture | plantations | forestry | garden | health care

WARRANTY AND FREE SERVICE COUPON



Small Maintenance. Big Savings.



Small Maintenance. Big Savings.



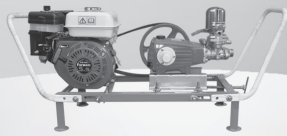
Small Maintenance. Big Savings.

Do's & Don'ts

- Always read the instruction manual supplied along with the equipments and understand the correct installation and operating procedures before attempting to use the equipments.
- It is important to use the personal protection equipments such as head helmet with visor, ear defenders, goggles, safety gloves, cut resistant shoes, trousers and jackets while operating potentially dangerous machines.
- Avoid untrained persons using the equipments. Children must not be allowed to handle these equipments.
- Always use genuine spares and accessories in repairs and usage to derive maximum life of the equipments.
- Always keep the equipments in good working condition to minimise loss of output as well as to reduce the pollution and save the environment.
- Do not use the machine within range of persons unless they wear protective clothing.
- Do not operate the machine when fatigued or under the influence of alcohol or drugs.
- For more query kindly contact for our Service Center/Dealer/ franchise

Agrimate Army For Pest Control

ANY WHERE - ANY TIME - ANY CROP




AGRIMATE[®]
Maximum Power - Super Economy

RATNAGIRI IMPEX PVT LTD
Annapurna House, #1/1G, 7th Cross, New Guddadahalli
Mysore Road, Bangalore-560 026
Customer Care: 1800-425-7475
email: customercare@ratnagiriimpex.com



Marketed by:
ratnagiri impex[®]
BRINGING YOU THE FUTURE... NOW

www.ratnagiriimpex.com

AN ISO 9001:2008 CERTIFIED COMPANY